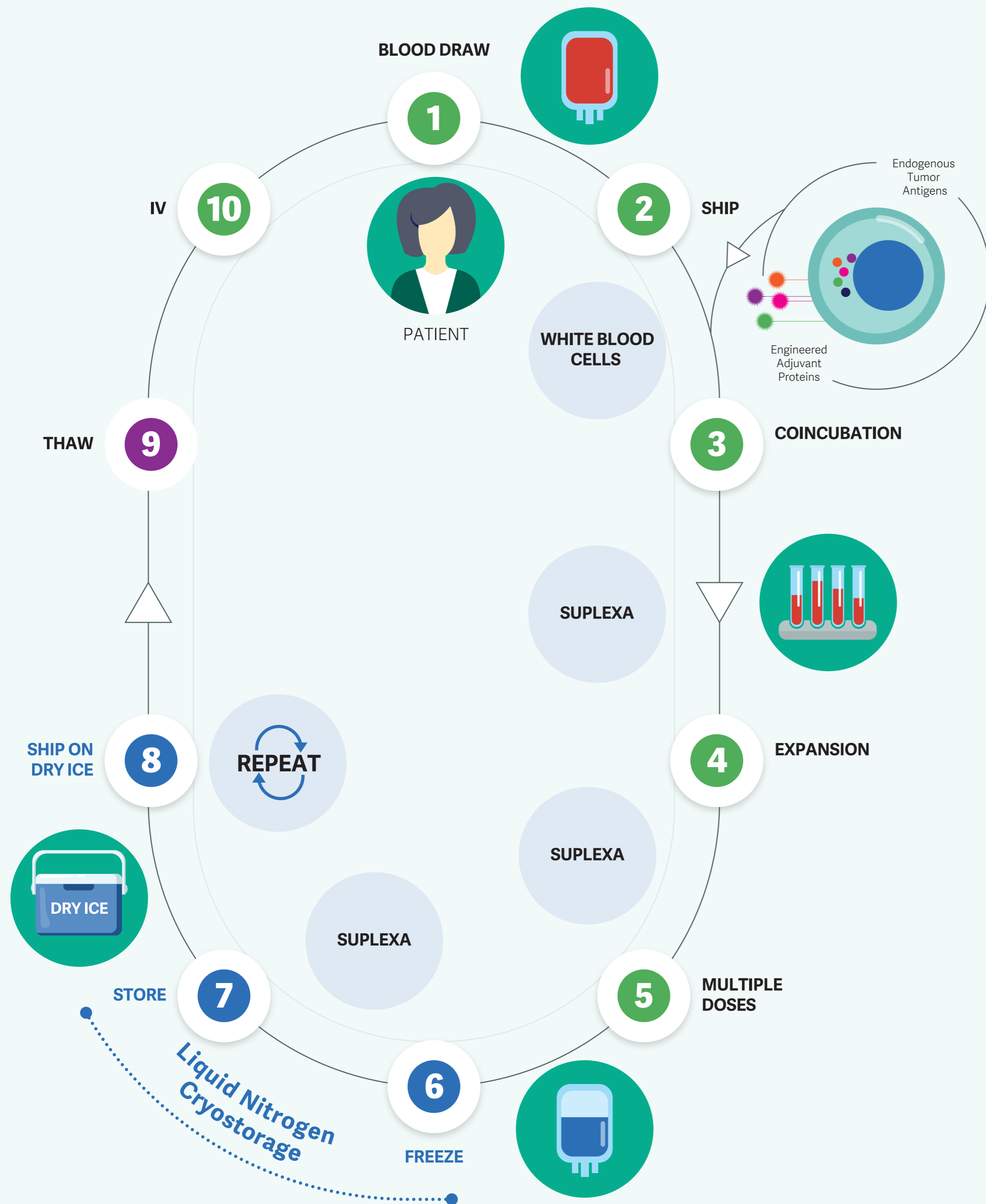


SUPLEXA therapeutic cells Process



- 1 Small volume of whole blood is drawn from the patient.
- 2 Blood is shipped overnight to a regional laboratory to isolate the white blood cells.
- 3 White blood cells are co-incubated with ENLIST training cells to induce the production of SUPLEXA therapeutic cells.
- 4 SUPLEXA cells are expanded to high numbers.
- 5 SUPLEXA cells are formulated and prepared as individual doses in IV bags.
- 6 SUPLEXA cell doses are frozen in a controlled manner in cryogenic media.
- 7 SUPLEXA cell doses can be stored for long periods under liquid nitrogen conditions.
- 8 SUPLEXA cell doses are shipped on dry ice when requested by the treating physician.
- 9 SUPLEXA cells doses are thawed at the bedside just prior to administration.
- 10 Patient receives weekly doses of SUPLEXA therapeutic cells using a standard intravenous line.